

## **Come Discover Your New Home at Brookstone!**

Located at:  
2575 East 1st Street  
Loveland, CO 80537



Brookstone Apartment Homes is an affordable apartment community located in Southeastern Loveland, providing easy access to I-25, schools, shopping, entertainment and is directly across the street from the new Boys and Girls Club.

**Amenities include:** refrigerator, range, disposal, dishwasher, central air, individual electric washer / dryer hook-ups, and deck / patio. Each unit is cable ready and has its own gas forced air heating unit. Brookstone Apartment Homes feature a 1,108 sq. ft. clubhouse with a meeting room, an adjoining playground and sports court.

**Contact Us Today!!**

**375 W. 37th St., Suite 200  
Loveland, CO 80538**

**Phone:  
Cheryl West  
970-635-5937 or  
970-227-6313**

**Email:  
cwest@lovelandhsg.org**

**TDD 970-667-3293  
Open Monday –Friday  
8am to 5 pm**

Brookstone Apartment Homes offer a wide array of amenities both inside and out. Please see the reverse side for pricing and apartment information.

- No Application Fee
- Onsite Manager
- 24 Hour On-Call Maintenance



**WELCOME HOME**

# Pricing and Income Information

## INCOME LIMITS

Persons in Household	Maximum Incomes	
	<u>40% AMI</u>	<u>50% AMI</u>
1 Person	\$21,040	\$26,300
2 Persons	\$24,080	\$30,100
3 Persons	\$27,080	\$33,850
4 Persons	\$30,808	\$37,600
5 Persons	\$32,480	\$40,600

## RENT SCHEDULE

Unit Size	Monthly Rent	
	<u>40% AMI</u>	<u>50% AMI</u>
2 Bed/2 Bath	\$557	\$652
3 Bed/2 Bath	\$702	N/A

**Your Gross income should not be less than:**

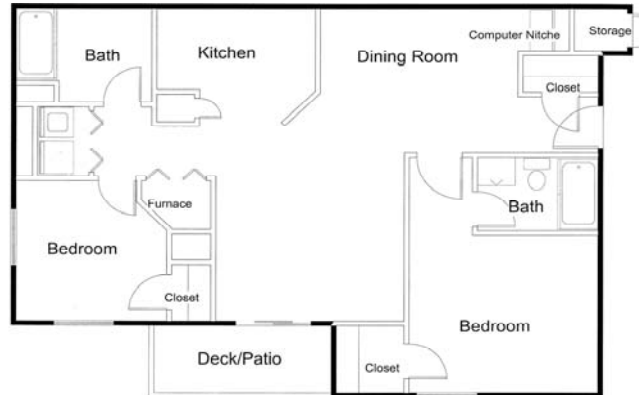
*\$1,325/mo for a two bedroom*

*\$1,625/mo for a three bedroom*

- Gross income includes the combined annual income of all people living and working in the home.
- Residents are responsible for the gas and electric utilities.
- A security deposit of one month's rent is required at move-in.

# Two and Three Bedroom Apartments Available

## 2 Bedroom—978 SqFt



## 3 Bedroom—1,118 SqFt



The Housing Authority of the City of Loveland does not discriminate on the basis of sex, age, race, religion, familial status, national origin or disability, in the admissions of, access to, treatment of or employment in its federally assisted programs or activities.

**WELCOME HOME**